



63 ACRES

HARROWSMITH

HAMLET DESIGNATED LANDS

OFFERED AT \$2,250,000.00

Cell: 613.541.9821
Email: patrickhulley@gmail.com
Web: commercialsource.ca

RE/MAX RISE Executives, Brokerage - COMMERCIAL DIVISION
OFFERED BY: PATRICK HULLEY
BROKER OF RECORD / CO-OWNER



A PLAN OF SURVEY. Image © First Base Solutions Inc. & Teranet 2025. Boundary may not line up with aerial photo

DEVELOPMENT LAND OPPORTUNITY

63+/- ACRES

FRONTING NOTRE DAME ST

HARROWSMITH, ON

Prime Development Opportunity within the Hamlet Designation of Harrowsmith, featuring approximately 850 feet of frontage along Notre Dame Street. The site is directly adjacent to Centennial Park and recreational facilities, and backs onto the K&P Trail—part of the broader Cataraqui and Rideau Trail system—exceptional lifestyle amenities for a residential development. Just 17 km to the Hwy 401 & 38 interchange and minutes from Kingston, this location offers both rural charm and urban convenience.

OVERVIEW

The property lies within a defined Settlement Area under the South Frontenac Official Plan, which states:

"It is the intent of the Township that these Settlement Areas will be the focus of a significant portion of new residential and non-residential development."

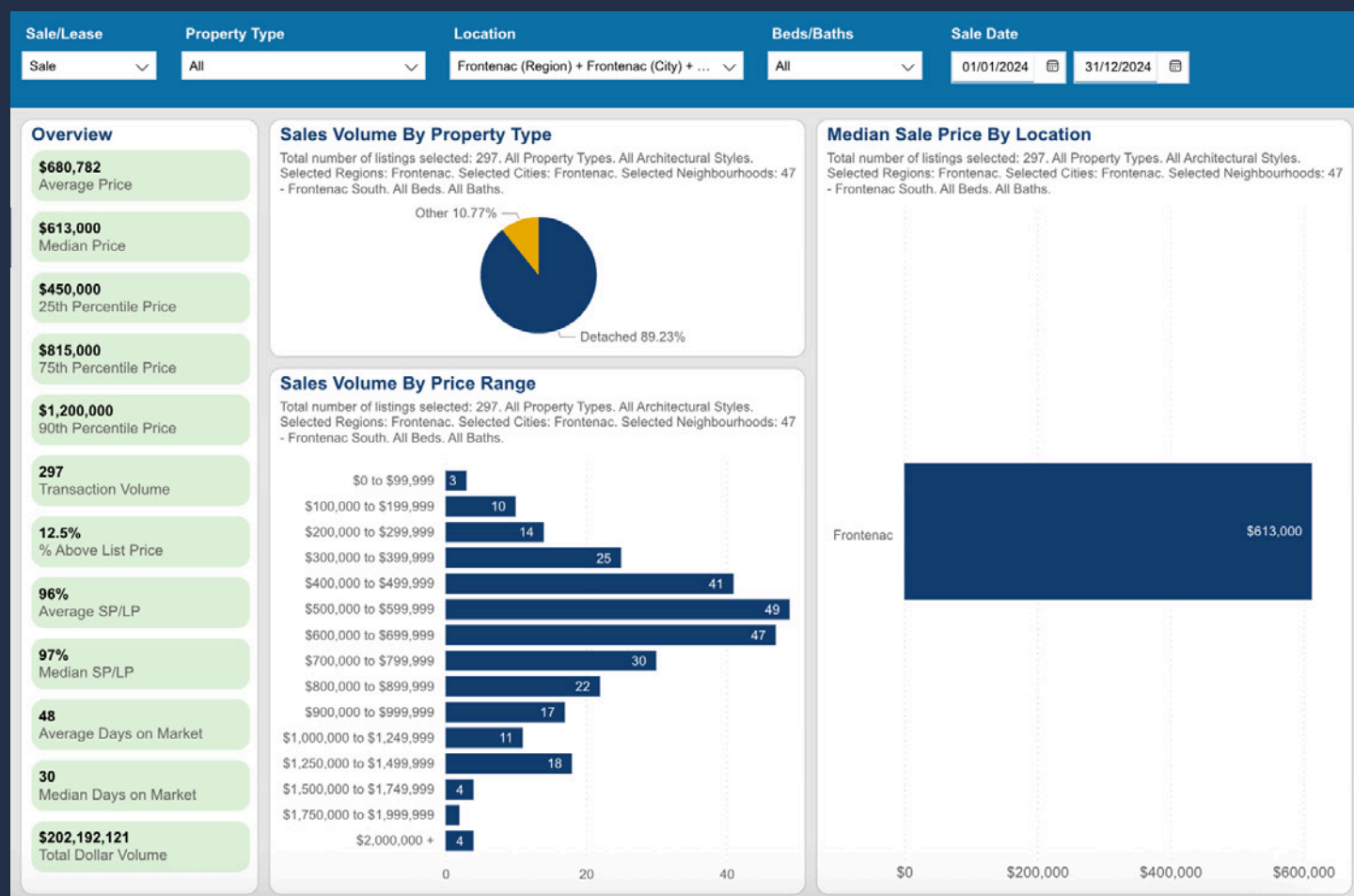
Subject to municipal and planning approvals, the site represents an opportunity for a residential draft plan of subdivision. The combination of proximity to Kingston, adjacent parkland, trail access, and highway connectivity—set within a community.



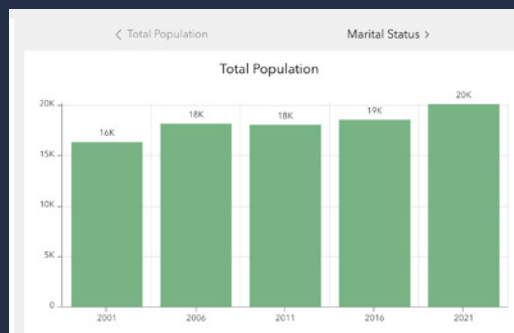
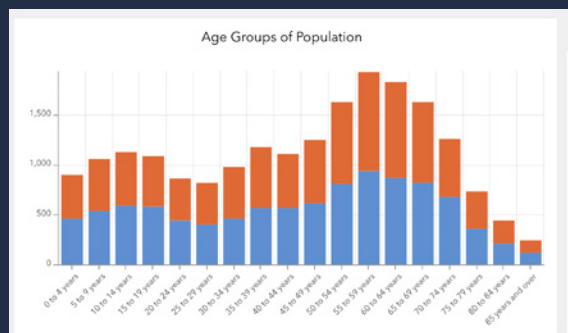
MARKET PROFILE & DEMOGRAPHICS



2024 KAREA MLS® Sales Data - South Frontenac (including Harrowsmith):



MARKET AREA - DEMOGRAPHICS:



ROAD ALLOWANCE BETWEEN CONCESSIONS 5 AND 6
(30.117 metres wide)

LOT CORNER

CONCESSION 5

CONCESSION 6

CONCESSION 7

CONCESSION 8

CONCESSION 9

CONCESSION 10

CONCESSION 11

CONCESSION 12

CONCESSION 13

CONCESSION 14

CONCESSION 15

CONCESSION 16

CONCESSION 17

CONCESSION 18

CONCESSION 19

CONCESSION 20

CONCESSION 21

CONCESSION 22

CONCESSION 23

CONCESSION 24

CONCESSION 25

CONCESSION 26

CONCESSION 27

CONCESSION 28

CONCESSION 29

CONCESSION 30

CONCESSION 31

CONCESSION 32

CONCESSION 33

CONCESSION 34

CONCESSION 35

CONCESSION 36

CONCESSION 37

CONCESSION 38

CONCESSION 39

CONCESSION 40

CONCESSION 41

CONCESSION 42

CONCESSION 43

CONCESSION 44

CONCESSION 45

CONCESSION 46

CONCESSION 47

CONCESSION 48

CONCESSION 49

CONCESSION 50

CONCESSION 51

CONCESSION 52

CONCESSION 53

CONCESSION 54

CONCESSION 55

CONCESSION 56

CONCESSION 57

CONCESSION 58

CONCESSION 59

CONCESSION 60

CONCESSION 61

CONCESSION 62

CONCESSION 63

CONCESSION 64

CONCESSION 65

CONCESSION 66

CONCESSION 67

CONCESSION 68

CONCESSION 69

CONCESSION 70

CONCESSION 71

CONCESSION 72

CONCESSION 73

CONCESSION 74

CONCESSION 75

CONCESSION 76

CONCESSION 77

CONCESSION 78

CONCESSION 79

CONCESSION 80

CONCESSION 81

CONCESSION 82

CONCESSION 83

CONCESSION 84

CONCESSION 85

CONCESSION 86

CONCESSION 87

CONCESSION 88

CONCESSION 89

CONCESSION 90

CONCESSION 91

CONCESSION 92

CONCESSION 93

CONCESSION 94

CONCESSION 95

CONCESSION 96

CONCESSION 97

CONCESSION 98

CONCESSION 99

CONCESSION 100

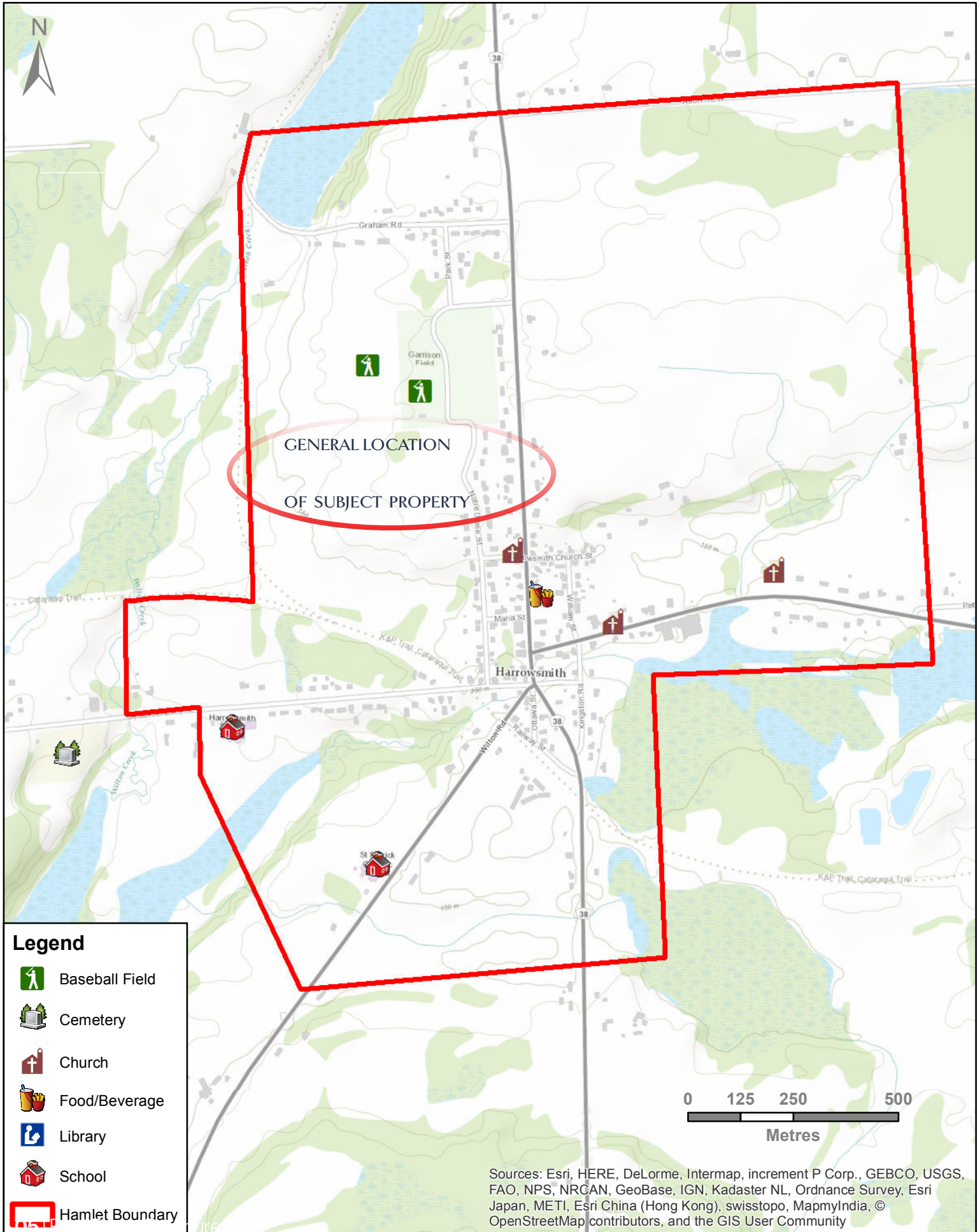


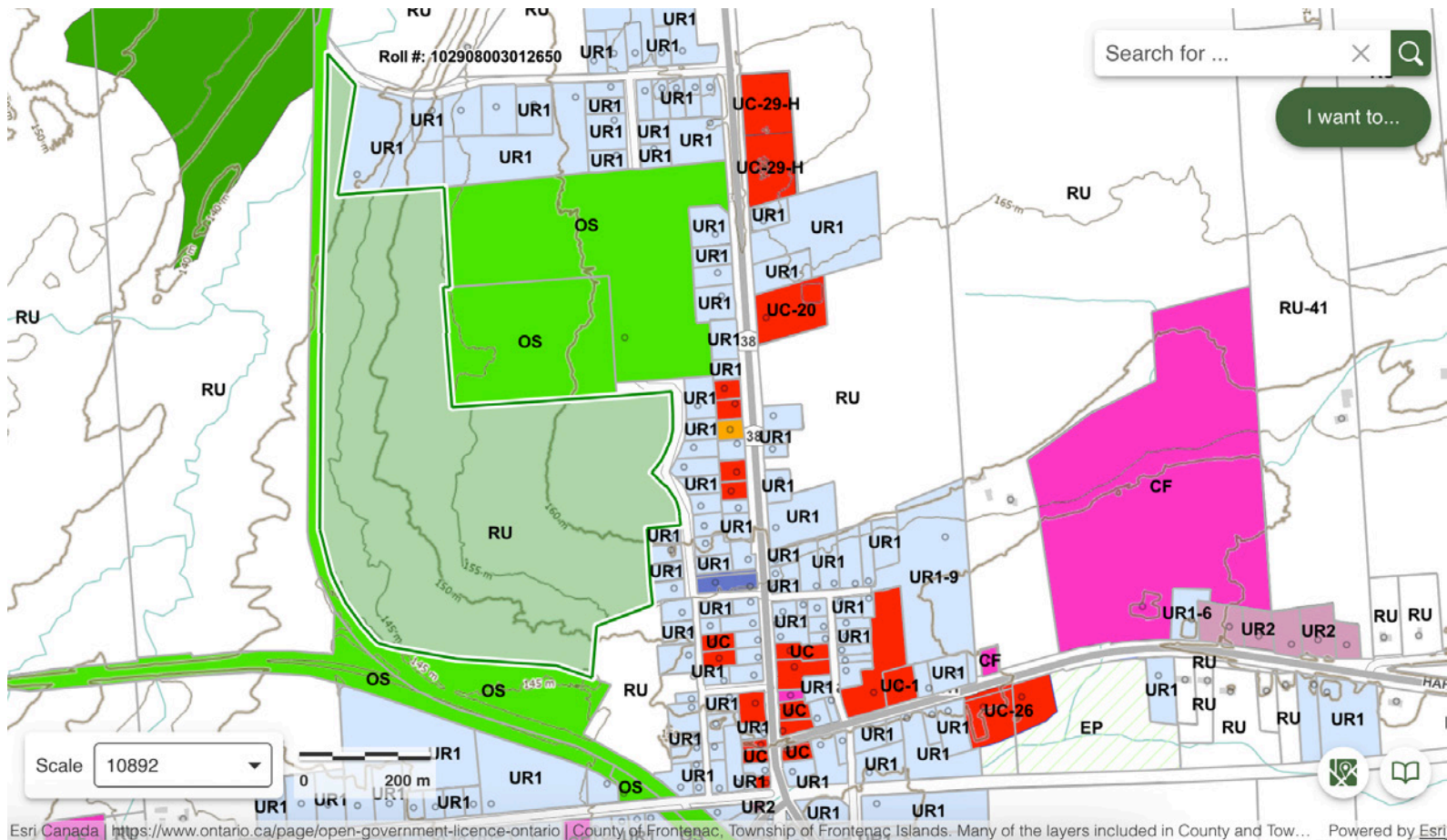
PLAN OF SURVEY OF PART OF LOT A, in BLOCK G REGISTERED PLAN No. 57, Village of Harrowsmith AND PART OF LOTS 7 AND 8, CONCESSION 5 Geographic Township of Portland All in the TOWNSHIP OF SOUTH FRONTENAC County of Frontenac

SCALE = 1:1500 - 2008 McDonald & Eberhardt Surveying Ltd.

NOTE
Bearings are astronomic and are derived from the northern limit of PART 6 of Plan 139-698 shown thereon as N85°58'10"E and noted hereon as Reference Bearing.
PART limits are unfenced unless otherwise noted.

- LEGEND**
- Survey Monument Plotted
 - Iron Bar (18 mm x 180 mm)
 - Standard Iron Bar (18 mm x 180 mm)
 - Short Standard Iron Bar (18 mm x 180 mm)
 - Rock Bar
 - Rock Plug
 - Concrete Pin
 - Wireless
 - Flagging: CLF - chain link, BF - board
 - W - post and wire, RF - red, SWF - orange red
 - W - steel corner LAL, O.L.S.
 - D - Eberhardt Surveying Ltd., O.L.S.
 - T.M. - T.M. McDonald Surveying Ltd., O.L.S.
 - McDonald & Eberhardt Surveying Ltd., O.L.S.
 - Plan 139-698
 - Plan 139-699
 - Plan 139-700
 - Plan 139-701
 - Plan 139-702
 - Plan 139-703
 - Plan 139-704
 - Plan 139-705
 - Plan 139-706
 - Plan 139-707
 - Plan 139-708
 - Plan 139-709
 - Plan 139-710
 - Plan 139-711
 - Plan 139-712
 - Plan 139-713
 - Plan 139-714
 - Plan 139-715
 - Plan 139-716
 - Plan 139-717
 - Plan 139-718
 - Plan 139-719
 - Plan 139-720
 - Plan 139-721
 - Plan 139-722
 - Plan 139-723
 - Plan 139-724
 - Plan 139-725
 - Plan 139-726
 - Plan 139-727
 - Plan 139-728
 - Plan 139-729
 - Plan 139-730
 - Plan 139-731
 - Plan 139-732
 - Plan 139-733
 - Plan 139-734
 - Plan 139-735
 - Plan 139-736
 - Plan 139-737
 - Plan 139-738
 - Plan 139-739
 - Plan 139-740
 - Plan 139-741
 - Plan 139-742
 - Plan 139-743
 - Plan 139-744
 - Plan 139-745
 - Plan 139-746
 - Plan 139-747
 - Plan 139-748
 - Plan 139-749
 - Plan 139-750
 - Plan 139-751
 - Plan 139-752
 - Plan 139-753
 - Plan 139-754
 - Plan 139-755
 - Plan 139-756
 - Plan 139-757
 - Plan 139-758
 - Plan 139-759
 - Plan 139-760
 - Plan 139-761
 - Plan 139-762
 - Plan 139-763
 - Plan 139-764
 - Plan 139-765
 - Plan 139-766
 - Plan 139-767
 - Plan 139-768
 - Plan 139-769
 - Plan 139-770
 - Plan 139-771
 - Plan 139-772
 - Plan 139-773
 - Plan 139-774
 - Plan 139-775
 - Plan 139-776
 - Plan 139-777
 - Plan 139-778
 - Plan 139-779
 - Plan 139-780
 - Plan 139-781
 - Plan 139-782
 - Plan 139-783
 - Plan 139-784
 - Plan 139-785
 - Plan 139-786
 - Plan 139-787
 - Plan 139-788
 - Plan 139-789
 - Plan 139-790
 - Plan 139-791
 - Plan 139-792
 - Plan 139-793
 - Plan 139-794
 - Plan 139-795
 - Plan 139-796
 - Plan 139-797
 - Plan 139-798
 - Plan 139-799
 - Plan 139-800
 - Plan 139-801
 - Plan 139-802
 - Plan 139-803
 - Plan 139-804
 - Plan 139-805
 - Plan 139-806
 - Plan 139-807
 - Plan 139-808
 - Plan 139-809
 - Plan 139-810
 - Plan 139-811
 - Plan 139-812
 - Plan 139-813
 - Plan 139-814
 - Plan 139-815
 - Plan 139-816
 - Plan 139-817
 - Plan 139-818
 - Plan 139-819
 - Plan 139-820
 - Plan 139-821
 - Plan 139-822
 - Plan 139-823
 - Plan 139-824
 - Plan 139-825
 - Plan 139-826
 - Plan 139-827
 - Plan 139-828
 - Plan 139-829
 - Plan 139-830
 - Plan 139-831
 - Plan 139-832
 - Plan 139-833
 - Plan 139-834
 - Plan 139-835
 - Plan 139-836
 - Plan 139-837
 - Plan 139-838
 - Plan 139-839
 - Plan 139-840
 - Plan 139-841
 - Plan 139-842
 - Plan 139-843
 - Plan 139-844
 - Plan 139-845
 - Plan 139-846
 - Plan 139-847
 - Plan 139-848
 - Plan 139-849
 - Plan 139-850
 - Plan 139-851
 - Plan 139-852
 - Plan 139-853
 - Plan 139-854
 - Plan 139-855
 - Plan 139-856
 - Plan 139-857
 - Plan 139-858
 - Plan 139-859
 - Plan 139-860
 - Plan 139-861
 - Plan 139-862
 - Plan 139-863
 - Plan 139-864
 - Plan 139-865
 - Plan 139-866
 - Plan 139-867
 - Plan 139-868
 - Plan 139-869
 - Plan 139-870
 - Plan 139-871
 - Plan 139-872
 - Plan 139-873
 - Plan 139-874
 - Plan 139-875
 - Plan 139-876
 - Plan 139-877
 - Plan 139-878
 - Plan 139-879
 - Plan 139-880
 - Plan 139-881
 - Plan 139-882
 - Plan 139-883
 - Plan 139-884
 - Plan 139-885
 - Plan 139-886
 - Plan 139-887
 - Plan 139-888
 - Plan 139-889
 - Plan 139-890
 - Plan 139-891
 - Plan 139-892
 - Plan 139-893
 - Plan 139-894
 - Plan 139-895
 - Plan 139-896
 - Plan 139-897
 - Plan 139-898
 - Plan 139-899
 - Plan 139-900
 - Plan 139-901
 - Plan 139-902
 - Plan 139-903
 - Plan 139-904
 - Plan 139-905
 - Plan 139-906
 - Plan 139-907
 - Plan 139-908
 - Plan 139-909
 - Plan 139-910
 - Plan 139-911
 - Plan 139-912
 - Plan 139-913
 - Plan 139-914
 - Plan 139-915
 - Plan 139-916
 - Plan 139-917
 - Plan 139-918
 - Plan 139-919
 - Plan 139-920
 - Plan 139-921
 - Plan 139-922
 - Plan 139-923
 - Plan 139-924
 - Plan 139-925
 - Plan 139-926
 - Plan 139-927
 - Plan 139-928
 - Plan 139-929
 - Plan 139-930
 - Plan 139-931
 - Plan 139-932
 - Plan 139-933
 - Plan 139-934
 - Plan 139-935
 - Plan 139-936
 - Plan 139-937
 - Plan 139-938
 - Plan 139-939
 - Plan 139-940
 - Plan 139-941
 - Plan 139-942
 - Plan 139-943
 - Plan 139-944
 - Plan 139-945
 - Plan 139-946
 - Plan 139-947
 - Plan 139-948
 - Plan 139-949
 - Plan 139-950
 - Plan 139-951
 - Plan 139-952
 - Plan 139-953
 - Plan 139-954
 - Plan 139-955
 - Plan 139-956
 - Plan 139-957
 - Plan 139-958
 - Plan 139-959
 - Plan 139-960
 - Plan 139-961
 - Plan 139-962
 - Plan 139-963
 - Plan 139-964
 - Plan 139-965
 - Plan 139-966
 - Plan 139-967
 - Plan 139-968
 - Plan 139-969
 - Plan 139-970
 - Plan 139-971
 - Plan 139-972
 - Plan 139-973
 - Plan 139-974
 - Plan 139-975
 - Plan 139-976
 - Plan 139-977
 - Plan 139-978
 - Plan 139-979
 - Plan 139-980
 - Plan 139-981
 - Plan 139-982
 - Plan 139-983
 - Plan 139-984
 - Plan 139-985
 - Plan 139-986
 - Plan 139-987
 - Plan 139-988
 - Plan 139-989
 - Plan 139-990
 - Plan 139-991
 - Plan 139-992
 - Plan 139-993
 - Plan 139-994
 - Plan 139-995
 - Plan 139-996
 - Plan 139-997
 - Plan 139-998
 - Plan 139-999
 - Plan 1400-000
 - Plan 1400-001
 - Plan 1400-002
 - Plan 1400-003
 - Plan 1400-004
 - Plan 1400-005
 - Plan 1400-006
 - Plan 1400-007
 - Plan 1400-008
 - Plan 1400-009
 - Plan 1400-010
 - Plan 1400-011
 - Plan 1400-012
 - Plan 1400-013
 - Plan 1400-014
 - Plan 1400-015
 - Plan 1400-016
 - Plan 1400-017
 - Plan 1400-018
 - Plan 1400-019
 - Plan 1400-020
 - Plan 1400-021
 - Plan 1400-022
 - Plan 1400-023
 - Plan 1400-024
 - Plan 1400-025
 - Plan 1400-026
 - Plan 1400-027
 - Plan 1400-028
 - Plan 1400-029
 - Plan 1400-030
 - Plan 1400-031
 - Plan 1400-032
 - Plan 1400-033
 - Plan 1400-034
 - Plan 1400-035
 - Plan 1400-036
 - Plan 1400-037
 - Plan 1400-038
 - Plan 1400-039
 - Plan 1400-040
 - Plan 1400-041
 - Plan 1400-042
 - Plan 1400-043
 - Plan 1400-044
 - Plan 1400-045
 - Plan 1400-046
 - Plan 1400-047
 - Plan 1400-048
 - Plan 1400-049
 - Plan 1400-050
 - Plan 1400-051
 - Plan 1400-052
 - Plan 1400-053
 - Plan 1400-054
 - Plan 1400-055
 - Plan 1400-056
 - Plan 1400-057
 - Plan 1400-058
 - Plan 1400-059
 - Plan 1400-060
 - Plan 1400-061
 - Plan 1400-062
 - Plan 1400-063
 - Plan 1400-064
 - Plan 1400-065
 - Plan 1400-066
 - Plan 1400-067
 - Plan 1400-068
 - Plan 1400-069
 - Plan 1400-070
 - Plan 1400-071
 - Plan 1400-072
 - Plan 1400-073
 - Plan 1400-074
 - Plan 1400-075
 - Plan 1400-076
 - Plan 1400-077
 - Plan 1400-078
 - Plan 1400-079
 - Plan 1400-080
 - Plan 1400-081
 - Plan 1400-082
 - Plan 1400-083
 - Plan 1400-084
 - Plan 1400-085
 - Plan 1400-086
 - Plan 1400-087
 - Plan 1400-088
 - Plan 1400-089
 - Plan 1400-090
 - Plan 1400-091
 - Plan 1400-092
 - Plan 1400-093
 - Plan 1400-094
 - Plan 1400-095
 - Plan 1400-096
 - Plan 1400-097
 - Plan 1400-098
 - Plan 1400-099
 - Plan 1400-100
 - Plan 1400-101
 - Plan 1400-102
 - Plan 1400-103
 - Plan 1400-104
 - Plan 1400-105
 - Plan 1400-106
 - Plan 1400-107
 - Plan 1400-108
 - Plan 1400-109
 - Plan 1400-110
 - Plan 1400-111
 - Plan 1400-112
 - Plan 1400-113
 - Plan 1400-114
 - Plan 1400-115
 - Plan 1400-116
 - Plan 1400-117
 - Plan 1400-118
 - Plan 1400-119
 - Plan 1400-120
 - Plan 1400-121
 - Plan 1400-122
 - Plan 1400-123
 - Plan 1400-124
 - Plan 1400-125
 - Plan 1400-126
 - Plan 1400-127
 - Plan 1400-128
 - Plan 1400-129
 - Plan 1400-130
 - Plan 1400-131
 - Plan 1400-132
 - Plan 1400-133
 - Plan 1400-134
 - Plan 1400-135
 - Plan 1400-136
 - Plan 1400-137
 - Plan 1400-138
 - Plan 1400-139
 - Plan 1400-140
 - Plan 1400-141
 - Plan 1400-142
 - Plan 1400-143
 - Plan 1400-144
 - Plan 1400-145
 - Plan 1400-146
 - Plan 1400-147
 - Plan 1400-148
 - Plan 1400-149
 - Plan 1400-150
 - Plan 1400-151
 - Plan 1400-152
 - Plan 1400-153
 - Plan 1400-154
 - Plan 1400-155
 - Plan 1400-156
 - Plan 1400-157
 - Plan 1400-158
 - Plan 1400-159
 - Plan 1400-160
 - Plan 1400-161
 - Plan 1400-162
 - Plan 1400-163
 - Plan 1400-164
 - Plan 1400-165
 - Plan 1400-166
 - Plan 1400-167
 - Plan 1400-168
 - Plan 1400-169
 - Plan 1400-170
 - Plan 1400-171
 - Plan 1400-172
 - Plan 1400-173
 - Plan 1400-174
 - Plan 1400-175
 - Plan 1400-176
 - Plan 1400-177
 - Plan 1400-178
 - Plan 1400-179
 - Plan 1400-180
 - Plan 1400-181
 - Plan 1400-182
 - Plan 1400-183
 - Plan 1400-184
 - Plan 1400-185
 - Plan 1400-186
 - Plan 1400-187
 - Plan 1400-188
 - Plan 1400-189
 - Plan 1400-190
 - Plan 1400-191
 - Plan 1400-192
 - Plan 1400-193
 - Plan 1400-194
 - Plan 1400-195
 - Plan 1400-196
 - Plan 1400-197
 - Plan 1400-198
 - Plan 1400-199
 - Plan 1400-200
 - Plan 1400-201
 - Plan 1400-202
 - Plan 1400-203
 - Plan 1400-204
 - Plan 1400-205
 - Plan 1400-206
 - Plan 1400-207
 - Plan 1400-208
 - Plan 1400-209
 - Plan 1400-210
 - Plan 1400-211
 - Plan 1400-212
 - Plan 1400-213
 - Plan 1400-214
 - Plan 1400-215
 - Plan 1400-216
 - Plan 1400-217
 - Plan 1400-218
 - Plan 1400-219
 - Plan 1400-220
 - Plan 1400-221
 - Plan 1400-222
 - Plan 1400-223
 - Plan 1400-224
 - Plan 1400-225
 - Plan 1400-226
 - Plan 1400-227
 - Plan 1400-228
 - Plan 1400-229
 - Plan 1400-230
 - Plan 1400-231
 - Plan 1400-232
 - Plan 1400-233
 - Plan 1400-234
 - Plan 1400-235
 - Plan 1400-236
 - Plan 1400-237
 - Plan 1400-238
 - Plan 1400-239
 - Plan 1400-240
 - Plan 1400-241
 - Plan 1400-242
 - Plan 1400-243
 - Plan 1400-244
 - Plan 1400-245
 - Plan 1400-246
 - Plan 1400-247
 - Plan 1400-248
 - Plan 1400-249
 - Plan 1400-250
 - Plan 1400-251
 - Plan 1400-252
 - Plan 1400-253
 - Plan 1400-254
 - Plan 1400-255
 - Plan 1400-





Current Zoning is RU a rural zone class, however the property does fall within the Hamlet Boundary of Harrowsmith. The Intent of the Hamlets per the Official Plan is outlined below and in general principal is to support the needs of housing and within community support. In the instance of Harrowsmith the development within is not serviced by any municipal services and would be serviced by private within well and septs. This presents a limitation on developable area per lot and requirements of more detailed hydrogeological studies as well as ground studies to assure that the design is suitable for septic system classes required for the within development framework that would be required.



CENTENNIAL PARK PAVILION

A definition of Hamlet from the Official Plan within Settlement Areas is outlined below:

4.3 Settlement Areas

The Township contains several villages and hamlets, each with their own important history and identity. It is the intent of the Township that these Settlement Areas will be the focus of a significant portion of new residential and non-residential development. The purpose of this is to provide a range of housing options, transportation and recreation options, and community amenities and services. It is also to ensure municipal services are provided to the public in the most efficient manner possible while simultaneously protecting the natural environment and natural resources of the Township.

The Final Draft of the Township Official Plan was approved by council on April 8th, 2025 and as part of the New Official Plan Draft is the following with respect to communal septic systems denoted within:

2.1 How We Will Grow

The intent of the policies in this section is to guide where future development will occur within the Township, and to guide the expansion and development of the Township's infrastructure needs in a way that is environmentally and economically sustainable. Consideration of servicing options beyond private individual on-site sewage and water services, such as communal sewage and water services, provides an opportunity for the Township to support population and employment targets.





RESOURCE LINKS (click each link to view)

South Frontenac Final Draft Official Plan (April 8, 2025) - southfrontenac.net

Frontenac Maps Geo Hub - county-frontenac.hub

South Frontenac Zoning Bylaw - southfrontenac.net

Commercial Real Estate Search - commercialsource.ca

Meet Patrick Hulley - commercialsource.ca

LET'S TALK COMMERCIAL REAL ESTATE

Patrick Hulley is a founding partner of Your Realty Group & RE/MAX RISE Executives, Brokerage and is the Broker of Record & Co-owner with over 30 years of real estate experience.

Patrick specializes in Commercial Real Estate and is a recognized RE/MAX COMMERCIAL Division Agent. RE/MAX RISE Executives, Brokerage is an independently owned and operated franchise.



Call Directly: Speak with Patrick Hulley, Broker at **613-451-9821**

Search Online: Visit our website at **www.commercialsource.ca**

Email: Connect by email at **patrickhulley@gmail.com**

NOTE: Prospective Purchasers are advised to review independently and ascertain studies, reports and further requirements with respect to development potential. A review and preconsult with South Frontenac Planning Office is a key prerequisite to any review. E. & O.E.

